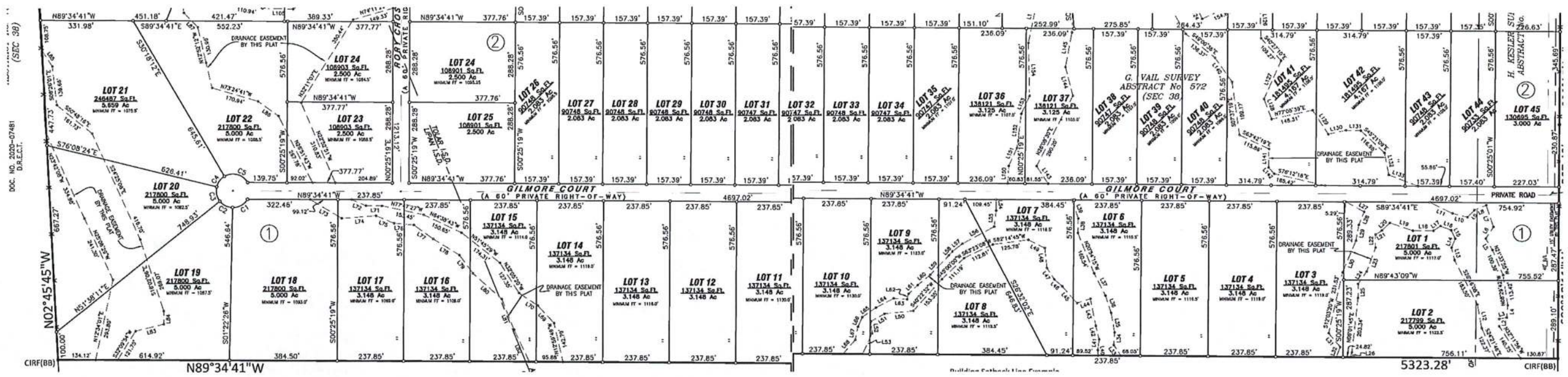




THE RANCHES AT STAR HOLLOW



LIPAN ISD TOLAR ISD



Community Information Summary:

Property Use & Lot Sizes:

Residential 2-5+ Acre Homesites

Building Restrictions:

1400 sq. ft. minimum for main dwelling

Smaller Barndos allowed for weekend getaways.

Animals:

One large animal per every 2 acres

Schools:

Tolar and Lipan ISD

Taxes:

Tolar ISD Lots: 1.55 % Lipan ISD Lots: 1.60%

Property dues:

Only \$500 per year

Hospitals:

Weatherford & Granbury Hospitals

Fire & Police:

Fire: Hood and Parker County / Hood and Parker County Sheriff

Utilities:

Electric: United Electric Co-Op

Water: Private Wells **Sewer:** Septic

Phone / Internet: United Fiber up to 1 Gig **Gas:** Propane

Building Setback Line Example

